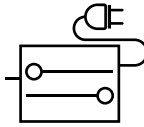


DDS757 è un controller DMX/RDM con due uscite OneWire, ed una uscita PWM in tensione costante da 4 canali. Questo driver sopporta carichi fino ad un massimo di 150W totali, quindi è in grado di alimentare due strip flessibili FLEX737, o sulla porta PWM il carico massimo applicabile è 150 W a 24Vdc totale, con il positivo comune. Le uscite di alimentazione PWM tensione costante e OneWire, sono protette elettronicamente, in caso di corto circuito il led di FAILURE si accende e viene disattivata l'uscita con il corto circuito, appena viene risolto il corto circuito o il superamento della massima corrente, l'alimentazione viene ripristinata automaticamente. Il sistema One Wire permette il controllo delle bobine flessibili da 5 metri in singolo metro con indirizzo DMX, ottenendo 15 canali DMX ogni bobina. Questo modulo è progettato per essere alimentato sia in AC che in DC, e di controllare il modo di emergenza tramite apposito ingresso, che attiva tutti i canali la 100%, per utilizzo di illuminazione di emergenza. Il DMX/RDM in ingresso viene amplificato e controllato in modo attivo, e poi inviato sul connettore di uscita, in caso di disturbi elettrici questi non vengono inviati sulla rete RDM in modo da evitare invio di dati non corretti. Il DMX/RDM è optoisolato dalla alimentazione, e riamplicato in modo isolato, in caso di guasto del modulo DDS757, un rele chiude un contatto tra ingresso e uscita, facendo un by pass del DMX che esce diretto sul connettore di out, in caso il modulo sia in grado di lavorare correttamente, questo by pass si apre e tutto funziona normalmente. Si possono collegare fino a 64 moduli in uscita grazie alla riamplicazione del segnale DMX/RDM.

One Wire DMX/RDM controller



DDS757 is a DMX / RDM OneWire controller with two outputs, and a PWM 4 output in constant Voltage. This driver deliver up to a maximum total of 150W, so it is able to supply two flexible strip FLEX737, or 4 PWM constant voltage output at maximum 150 W in total at 24Vdc, with positive common. The 4 PWM output power supply constant voltage and OneWire, are electronically protected, in case of short circuit the FAILURE Led lights up and turns off the output with short-circuit, is solved as soon as the short circuit or the exceeding of the maximum current, the power is restored automatically. The One Wire allows control of flex reel DDS737 5 meters in single meter with DMX address, getting 15 DMX channels each reel. This module is designed to be powered by both AC and DC, and control the emergency mode via special input, which activates all the 100% channel, for use of DMX / RDM as emergency light. The DMX/RDM is amplified and controlled in an active way, and then sent on the output connector, in case of electrical noise these are not sent on the RDM network so as to avoid sending incorrect data. The DMX / RDM is optically insulated from the power supply, and buffered, in the event of failure of the DDS757 module, a relay closes a contact between input is output, this by-pass of the DMX that comes out directly on the connector the DMX/RDM, in case the module is able to work correctly, this by-pass is opened and all works normally. It may be possible connect up to 64 modules in output thanks to the re-amplification of DMX / RDM signal.



Specifiche Tecniche | Technical Specification

| | Min. | Typ. | Max. |
|---------------------------|---|----------------|----------------|
| Power supply: | 100VAC/140VDC | | 260Vac/350Vdc |
| Power consumption: | 2W | 150W | 155W |
| Frequency: | 50Hz | | 60Hz |
| PFC | 0.90 full load | 0.96 full load | 0.98 full load |
| InRussh Current: | 7A-2ms | 8A-2ms | 9A-2ms |
| Electrical Efficiency: | 89% | 91% | 93% |
| Short Circuit Protection: | all 3 output protection | | |
| Common | positive for led connection | | |
| PWM frequency | 790Hz | 800Hz | 810Hz |
| Insulation: | 3750V AC input output 1500V Ac Input chassis Output port 500Vac | | |
| Audio Noise | 16db | 18db | 22db |
| DMX RDM | optoinsulated DMX and RDM buffered in output | | |
| Weight: | 1200 grams | | |
| environmental | | | |
| operating temperature: | -10° | +30° | +54°C |
| Storage temperature: | Tst -20° | +30° | +85° |
| Case temperature: | +65° | +65° | +65° |
| Relative humidity: | RH 80% | RH 80% | RH 80% |

Short circuit protection for all output self restart
Overtemperature protection self restart at normal condition
TC measuring point < 75 Degree C.

DDS757 is a DMX / RDM OneWire controller with two outputs, and a PWM 4 constant Voltage. This driver deliver up to a maximum total of 150W, so it can supply two flexible strip FLEX737, or 4 PWM constant voltage output at maximum 150W in total at 24Vdc, with positive common. The 4 PWM output power supply voltage and OneWire, are electronically protected, in case of short circuit the Led lights up and turns off the output with short-circuit, is solved as soon as the circuit or the exceeding of the maximum current, the power is automatically cut off. The One Wire allows control of flex reel DDS737 5 meters in single reel with DMX address, getting 15 DMX channels each reel. This module is designed to be powered by both AC and DC, and control the emergency mode via special input. In emergency mode, it activates all the 100% channel, for use of DMX / RDM as emergency mode. DMX/RDM is amplified and controlled in an active way, and then sent on the output connector, in case of electrical noise these are not sent on the RDM network to avoid sending incorrect data. The DMX / RDM is optically insulated from the power supply, and buffered, in the event of failure of the DDS757 module, a relay contact between input and output, this by-pass of the DMX that comes out directly from the connector the DMX/RDM, in case the module is able to work correctly, this relay is opened and all works normally. It may be possible to connect up to 64 modules in parallel output thanks to the re-amplification of DMX / RDM signal.

Overled®

| What's next? |

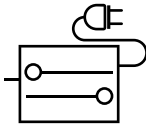


ELETRONICA

Overled è un marchio di DDS Elettronica s.r.l.

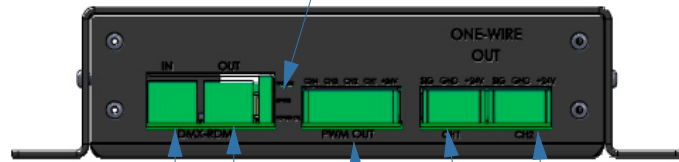
Via Biondo, 171 • 41126 Modena (Mo) • Italy • Tel: +39 059 3314.65 • info@overled.com

www.overled.com



Wiring:

Led Status:
Red = Fault
Yellow = status DMX
Green = power supply



DMX/RDM Input
Pin 1 DMX b -
Pin 2 DMX a +
Pin 3 GND shield
Connector Type:
Rj45 8 pins

DMX/RDM output
Pin 1 DMX b -
Pin 2 DMX a +
Pin 3 GND shield
Connector Type:
Rj45 8 pins

One Wire Channel 2
Pin 1 +24Vdc output
Pin 2 GND
Pin 3 One Wire signal
Connector type:
Wieland GST15i3

One Wire Channel 1
Pin 1 +24Vdc output
Pin 2 GND
Pin 3 One Wire signal
Connector type:
Wieland GST15i3

PWM constant voltage output
Pin 1 +24vdc output common
Pin 2 Channel 1
Pin 3 Channel 2
Pin 4 Channel 3
Pin 5 Channel 4
Connector Type:
Wieland GST 15i5S



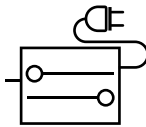
Ac/Dc power supply input
Pin 1 Neutral
Pin 2 Earth
Pin 3 Line
Connector Type:
Wieland GST 18i3S

Emergency input
Pin 1 Emerg. in
Pin 2 Emerg. in
Connector Type:
Wieland BST14i2F

Emergenza: questo ingresso se alimentato attiva la modalità di emergenza, tutte le uscite one Wire o PWM vanno alla massima potenza.

Emergency: This input select emergency mode, when activated all output one Wire or P W M are at the maximum power, all on.

| | |
|-----------------------|----------------|
| Tensione di ingresso: | Voltage input: |
| 12-260Vac 1mA | 12-260Vac 1mA |
| 12-310Vdc 1mA | 12-310Vdc 1mA |



Wiring:

DMX/RDM main line

Units 1

Units 2

Units 64

One Wire Channel 2 see data sheet for FLEX 737



One Wire Channel 1



cable type Overled CV.SC03 see datasheet



cable type Overled003 see datasheet

Buffered DMX/RDM out max 64 units

Overled®

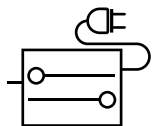
| What's next? |



ELETRONICA

Overled è un marchio di DDS Elettronica s.r.l.
via Biondo, 171 • 41126 Modena (Mo) • Italy • Tel: +39 059 3314.65 • info@overled.com

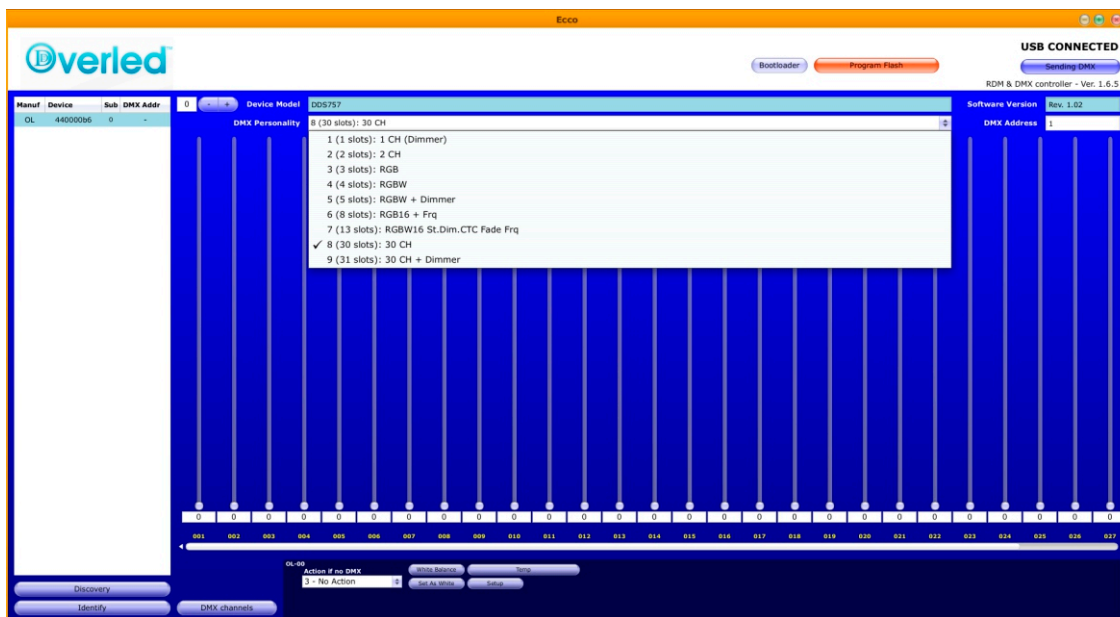
www.overled.com



DMX/RDM operation:

DDS757 è compatibile con DMX ed RDM 2.0. La comunicazione DMX/RDM è optoisolata e bufferata, e ripetuta in uscita sono anche filtrati eventuali disturbi, sulla linea dati. In caso la DDS757 non sia alimentata un relè chiude il contatto facendo un bypass entrata uscita, in modo da non avere l'interruzione dei dati ai moduli successivi, il led giallo indica l'attività DMX del modulo, tramite RDM è possibile invece cambiare l'indirizzo DMX, la personalità e la funzione del modulo in assenza DMX, come si può vedere sotto, sono selezionabili 9 personalità. Il programma RDM dello screen shot sotto è ECCO, vedi datasheet per informazioni, oppure utilizzare un qualsiasi programma compatibile RDM 2.0.

DDS757, is DMX/RMD full compliant module, the communication is optoinsulated, and buffered to the output, in case of noise during RDM operation, this unit analyze and filter the noise instead relaunch to the output, in case of power off or failure of the unit a relay bypass input and output making a pass thru DMX/RDM. By RDM software it can be possible set Personality, DMX address and action if no DMX received, in the screen shot ECCO software during RDM operation, see the Datasheet for ECCO, or use any RDM 2.0 compatible software for setting.



Personality

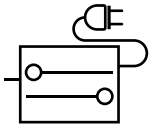
- 1 = 1 CH DIMMER, all output are regulated 0-100% by one slider use 1 DMX slot
- 2 = 2CH by 2 channel are regulated 0-100% only use 2 DMX slot
- 3 = RGB use 3 channels only 0-100% 3 DMX slot
- 4 = RGBW same as RGB but use 4 DMX slot
- 5 = same as RGBW, but master dimmer is used 5 DMX slot are used
- 6 = Control RGB at 16bits use 6 DMX slot + 2 DMX slot for PWM frequency adjust Rhig,Rlow;Ghigh,Glow;Bhigh,Blow;Freq.High,Freq.Low.
- 7 = RGBW 16 bits, strobo, Dimmer, CTC, FADE, Freq use 13 DMX Slot
- 8 = RGBW 8 slot 16bit each, strobo 1 slot, Dimmer 1 slot, CTC 1 slot, Freq 2 slot
- 9 = same as 8, but with DIMMER, 31 DMX slot total.

Action if no DMX:

You can select, if no DMX white color this set all output at the maximum power, this is recommended for emergency light, in case of loss of DMX for power failure all the light goes on. Other different settings are available.

TEMP:

Display maximum and minimum working temperature of the control.

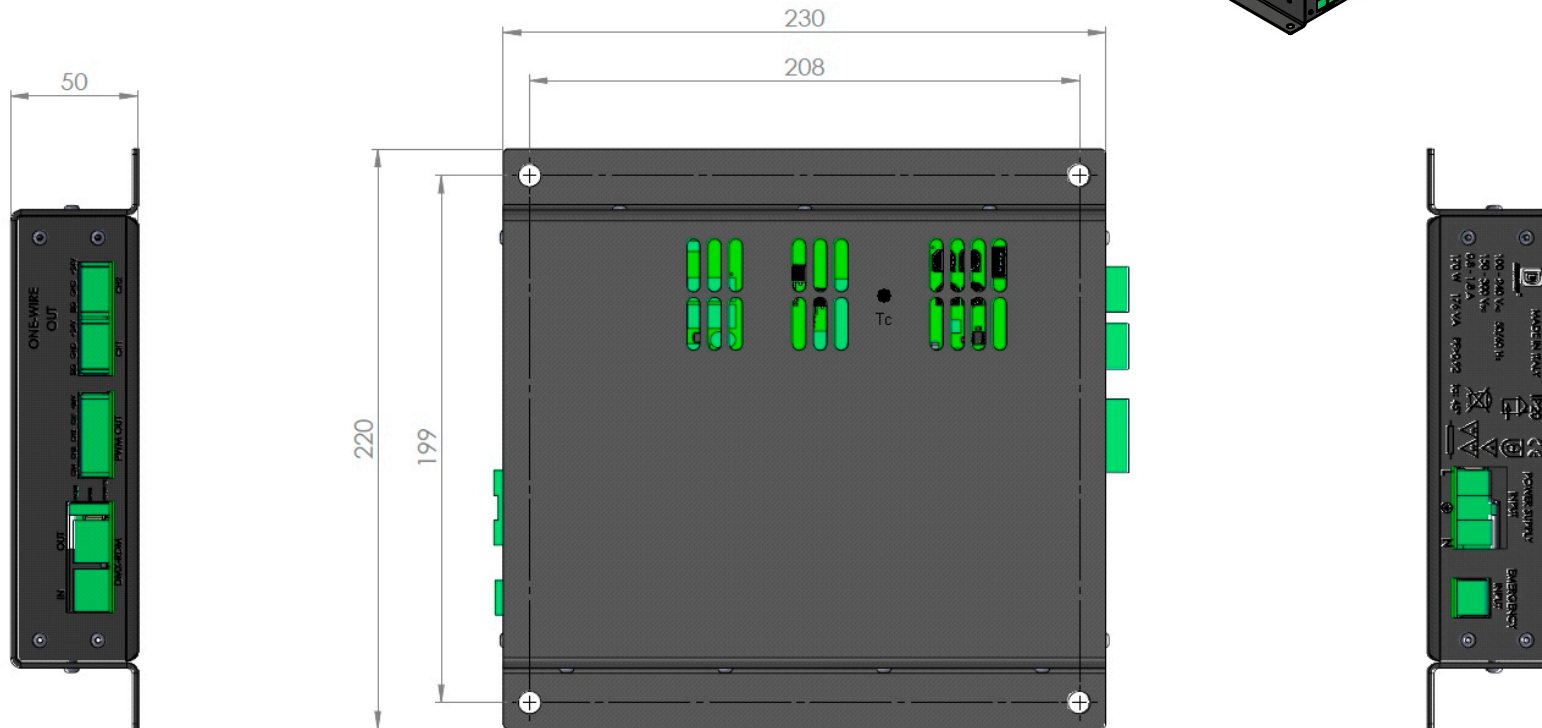
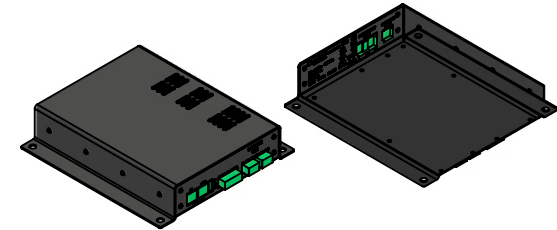


ALIMENTATORI CON SISTEMA DI CONTROLLO DMX INTEGRATO

DDS757

Codice di ordine
Ordering Code

DDS757



Overled®

| What's next? |



ELETRONICA

Overled è un marchio di DDS Elettronica s.r.l.

Via Biondo, 171 • 41126 Modena (Mo) • Italy • Tel: +39 059 3314.65 • info@overled.com

www.overled.com