



LED DRIVER CONSTANT CURRENT

LED DRIVER 60W

DDS832

DDS 832 è un driver in corrente costante per led in grado di lavorare fino ad un massimo di 50Vdc di alimentazione, questo permette di controllare led di alta potenza, fino ad un massimo di 60W.

La corrente è impostabile tramite switch rotativo a 10 posizioni, vedi tabella per riferimento dei livelli impostabili.

E' possibile rilanciare la alimentazione fino ad un massimo di 6 schede.

DDS 832 it is constant current LED driver , designed for high power led , this driver can work with power supply of 50VDC, max 60W.

The current output can be adjusted by 10 position rotary switch, please see the reference table for level setting.

Power supply LOOP possible up to 6 module DDS832.



Overled[®]
| What's next? |



LED DRIVER CONSTANT CURRENT

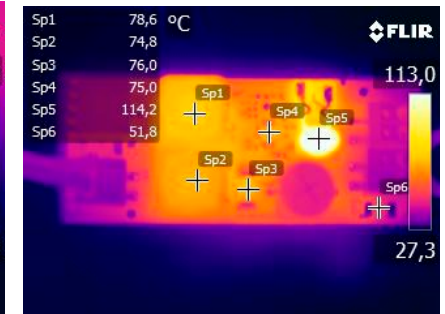
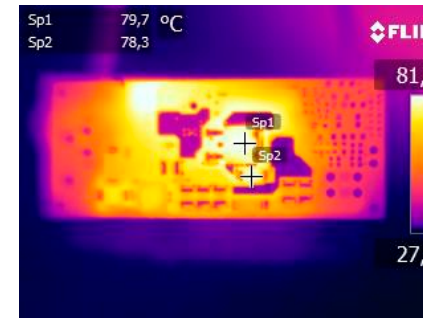
DDS832

MADE IN ITALY

Specifiche Tecniche | Technical Specification

	Min.	Typ.	Max.
Power supply Voltage:	24vdc	48vdc	52vdc
Power supply Current:	200mA	4.6A	4.8A
Dropout voltage = Vsupply-VFled	4.5Vdc	5Vdc	5.2Vdc
LED current :	350mA	900mA	1400mA
Efficiency :	85%	90%	91%
Short Circuit Protection:	full	protection	
Common			
Hysteretic Frequency out	720hz	733hz	790hz
Hysteretic Constant Current		1 channel output	
up to 12 led @48vdc			
MAX led	1 3W each	48 3W each	48 3W each
environmental			
operating temperature:	-10°	+30°	+45°C
Storage temperature:	Tst -20°	+30°	+85°
Case temperature TC :	+65°	+65°	+65°
Relative humidity:	RH 80%	RH 80%	RH 80%

T Case reference



Overled®

What's next? |



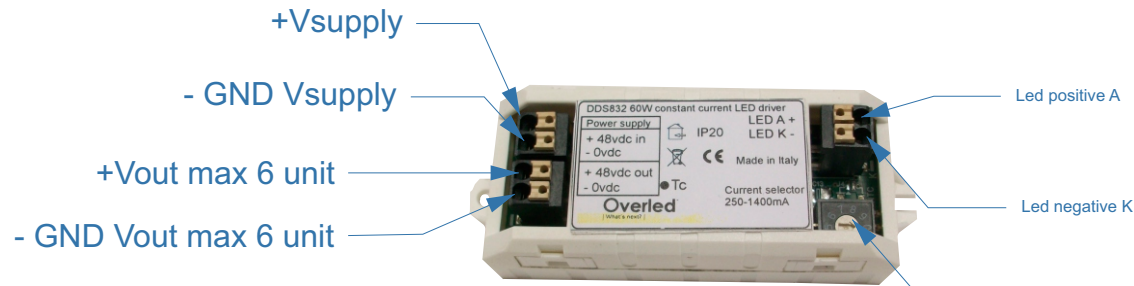


LED DRIVER CONSTANT CURRENT



DDS832

Wiring



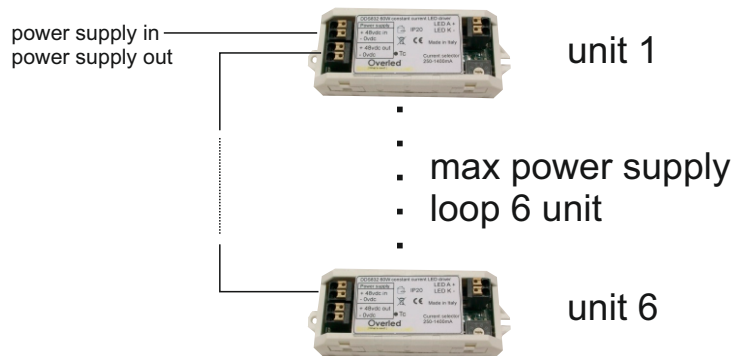
Ordering Code DDS832
Codice di ordine DDS832

Dimension Dimensioni



Cable gauge AWG24-AWG16

LED Current selector



Current selector	Current
0	350mA
1	500mA
2	700mA
3	850mA
4	1050mA
5	1200mA
6	1400mA
7	1400mA
8	1400mA
9	1400mA

Overled®

What's next?



Overled è un marchio di DDS Elettronica s.r.l.
via Biondo, 171 • 41126 Modena (Mo) • Italy • Tel: +39 059 3314.65 • info@overled.com

www.overled.com