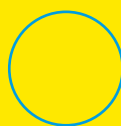




DDS900-SPI

DDS900-SPI



250 cm



5 mt



5,5 W mt



on board



24V



3528



Gold plated PAD



A++

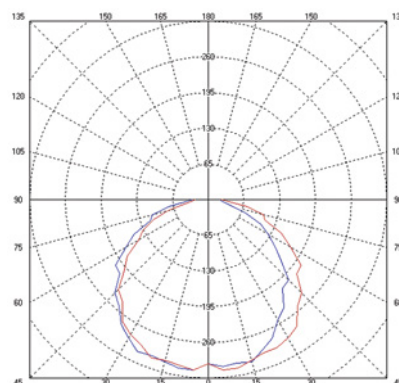
DDS900-SPI is a 5,5 W meter led strip with 56 led 3528 RGB per meter. DDS900-SPI for MBI use SPI protocol to control each led individually. To produce our indoor flexible LED strips, we use RGB high quality LEDs, gold plated flexible double side PCB and constant current control inside the LED strip. Thermal conductive adhesive tape guarantees perfect heat transfer to

the mounting surface. All of our product features guarantee extra long lifetime and stable performance. Our flexible LED light strips are designed for long term professional lighting applications and perfectly fit in any linear applications.

TECHNICAL SPECIFICATION

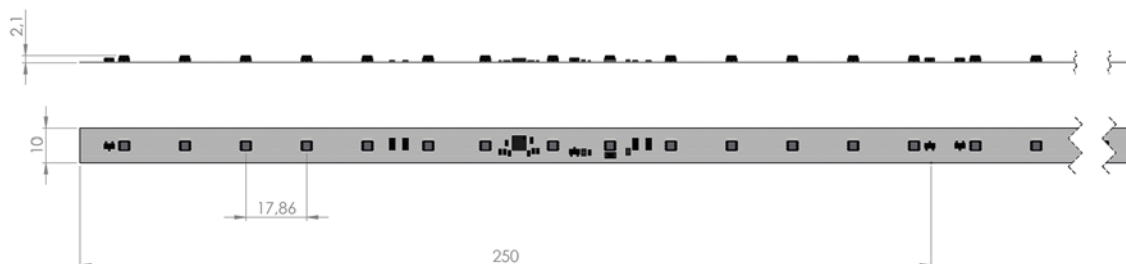
	unit	Typical
ELECTRICAL		
Power supply	Vdc	24
Total current	A	1,1
Total power	W	26
Current per meter	A	0,22
Power per meter	W	5,5
THERMAL		
Operating Temperature TC	C°	75
Life Time (25C° PCB surface)	h/24	55000

PHOTOMETRY



TEMPERATURE OPTIONS

RGB



	unit	Typical
OPTICAL		
Led per meter		56
Led model		3528
Light emission angle		120
Pixel per meter		4
Luminous efficiency	W/m	32
Luminous intensity per meter/Red	cd/mt	33
Luminous intensity per meter/Green	cd/mt	55
Luminous intensity per meter/Blu	cd/mt	15

	unit	Typical
MECHANICALS		
Width	mm	10
Lenght	mt	4,5
Cutting unit	mm	250
		Max
Pull Force	N	1
Pelling resistance	N/mm	0,8
Flexible resistance	Cycles	8
Max curve	mm	100