



LED DRIVER CONSTANT CURRENT

# SIMO Led controller

# DDS 1188-A

MADE IN ITALY

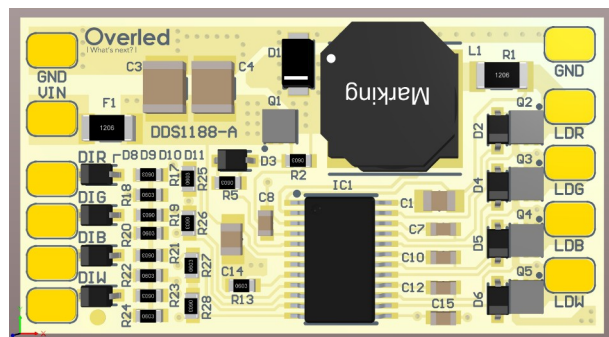
## General description

DDS1188-A is a constant current SIMO (Single Inductor Multiple Outputs) LED driver that can work at 24VDC or 48VDC with a maximum current of 500mA.

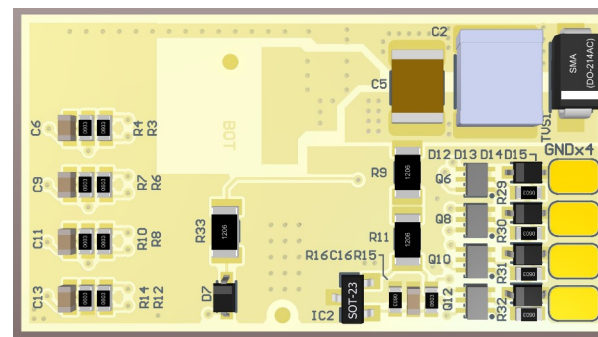
DDS1188-A can control up to 4 LED in series (es. RGBW): each LED can be controlled individually in “on/off” mode or PWM mode.

Wiring is provided by solder pads.

DDS1188-A comes in two versions: DDS1188-A and DDS1188-A-500 with 350mA and 500mA output current.



TOP



BOTTOM



ELETRONICA

Overled è un marchio di DDS Elettronica s.r.l.

Via Biondo, 171 • 41126 Modena (Mo) • Italy • Tel: +39 059 3314.65 • [info@overled.com](mailto:info@overled.com)

[www.overled.com](http://www.overled.com)

# Overled®

| What's next? |



LED DRIVER CONSTANT CURRENT

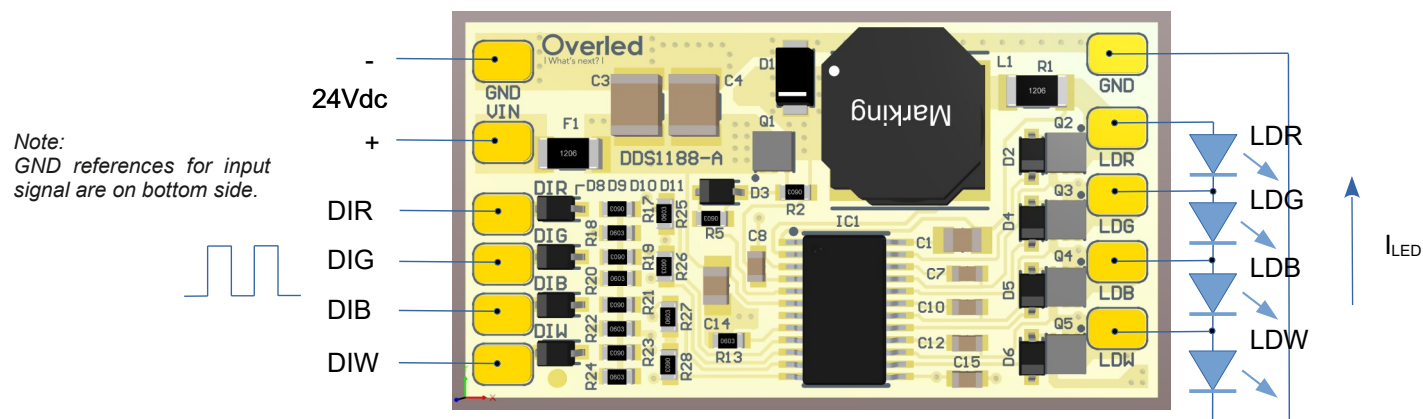
# SIMO Led controller

# DDS 1188-A

MADE IN ITALY

## Wiring

DDS1188-A wiring is visible in the figure below. Input signals are TTL compatible (totem pole or open collector) and can be driven in ON/OFF mode or in PWM mode (from 1kHz to 5 kHz). Output LED connections are in series with intermediate connetions.



Overled è un marchio di DDS Elettronica s.r.l.  
Via Biondo, 171 • 41126 Modena (Mo) • Italy • Tel: +39 059 3314.65 • [info@overled.com](mailto:info@overled.com)  
[www.overled.com](http://www.overled.com)

# Overled®

| What's next? |



LED DRIVER CONSTANT CURRENT

# SIMO Led controller

# DDS 1188-A

MADE IN ITALY

## Technical specifications

Power Supply Spec	MIN	TYP	MAX
Supply Voltage	20Vdc	24/48 Vdc	50Vdc
Startup voltage		20V	
Efficiency		85%	
<b>DDS1188-A</b>			
Output Current		350mA	
Supply Current (@24Vdc)		200mA	
Supply Current (@48Vdc)		100mA	
Max Output Power			4.2W
<b>DDS1188-A-500</b>			
Output Current		500mA	
Supply Current (@24Vdc)		300mA	
Supply Current (@48Vdc)		150mA	
Max Output Power			6W
Input signals Spec	MIN	TYP	MAX
channel #			4 (RGBW)
Input levels	TTL (totem pole or open collector)		
Input driving mode	ON/OFF or PWM		
PWM frequency	1kHz		5kHz
Thermal Spec	MIN	TYP	MAX
Operating temperature (Ta)	-10°C	+25°C	+45°C
Storage temperature (Ts)	-20°C	+25°C	+65°C
Storage Relative humidity (RH)			80%
Protections			
Fuse	1A		
Thermal protection	IC driver integrated		
Wiring Spec			
Connection	Solder pads		
Wire section	max 0.5 mm <sup>2</sup> for all connections		

**Conditions:**

Vout = 12Vdc



ELETRONICA

Overled è un marchio di DDS Elettronica s.r.l.

Via Biondo, 171 • 41126 Modena (Mo) • Italy • Tel: +39 059 3314.65 • [info@overled.com](mailto:info@overled.com)[www.overled.com](http://www.overled.com)

# Overled®

| What's next? |



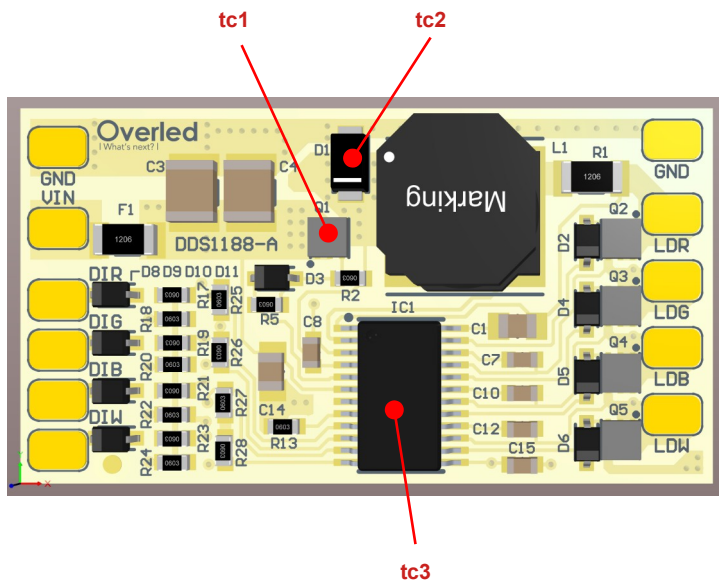
LED DRIVER CONSTANT CURRENT

# SIMO Led controller

# DDS 1188-A

MADE IN ITALY

## Temperature control points



Tc	Description	MAX
tc1	Main Switch (Mosfet)	+80°C
tc2	Recirculating Diode	+80°C
tc3	Driver IC	+80°C



Overled è un marchio di DDS Elettronica s.r.l.  
 Via Biondo, 171 • 41126 Modena (Mo) • Italy • Tel: +39 059 3314.65 • [info@overled.com](mailto:info@overled.com)  
[www.overled.com](http://www.overled.com)

**Overled**<sup>®</sup>  
 | What's next? |



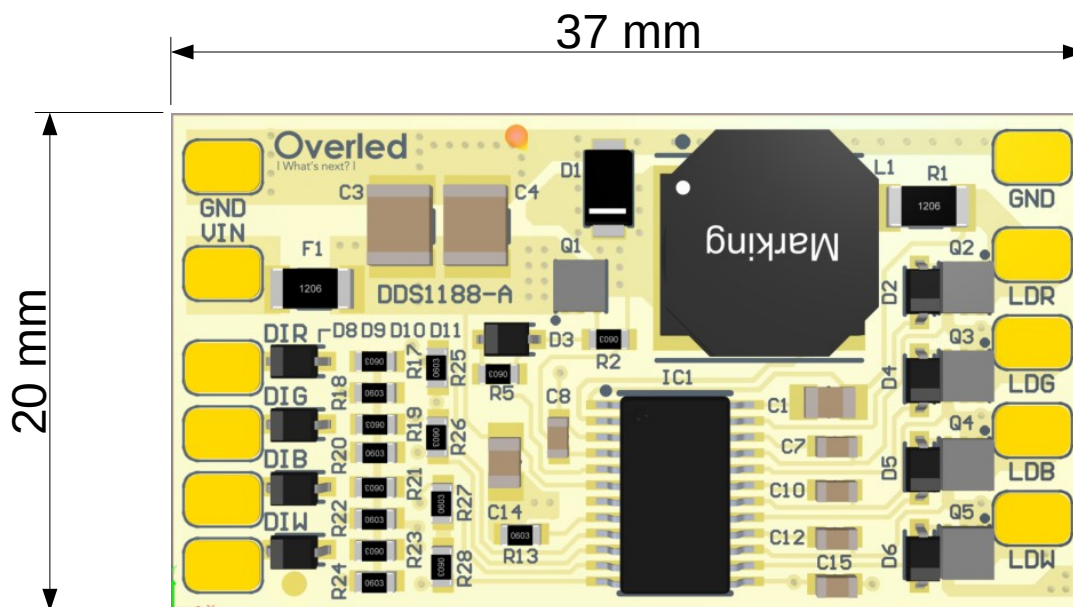
LED DRIVER CONSTANT CURRENT

# SIMO Led controller

# DDS 1188-A

MADE IN ITALY

## Dimensions



ELETRONICA

Overled è un marchio di DDS Elettronica s.r.l.

Via Biondo, 171 • 41126 Modena (Mo) • Italy • Tel: +39 059 3314.65 • [info@overled.com](mailto:info@overled.com)

[www.overled.com](http://www.overled.com)

# Overled®

| What's next? |