



LED Driver - PWM current regulation and max current set with NFC tag

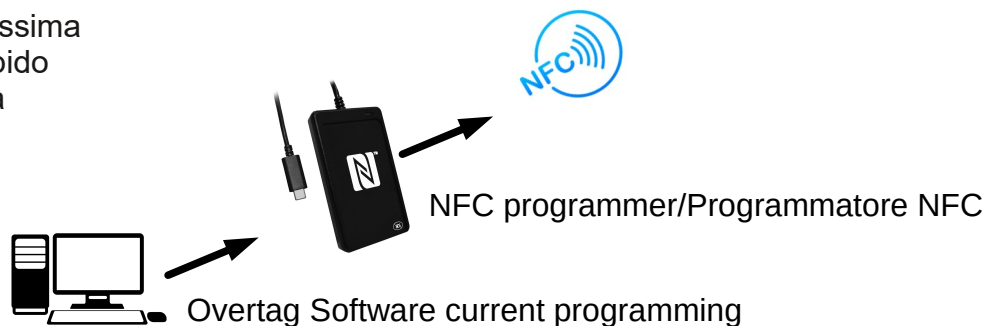
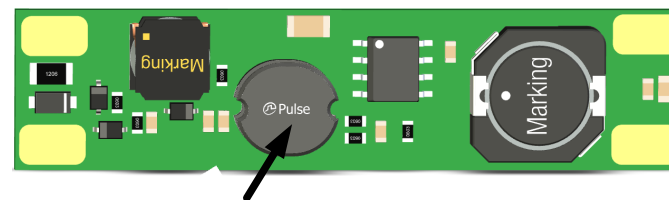
Overtag Driver DDS 1275

MADE IN ITALY

General description/Descrizione generale:

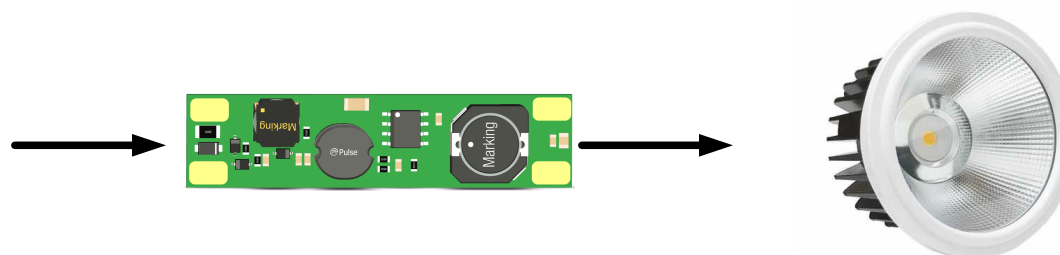
LED driver with current regulation and configurable maximum current threshold through an NFC Tag, allowing for quick setup of a wide range of variable current from 50mA to 1000mA via NFC tag.

Driver LED con regolazione della corrente e soglia massima configurabile tramite un NFC Tag, che consente un rapido settaggio di un ampio intervallo di corrente variabile da 50mA a 1000mA tramite NFC tag.



Typical Application/Applicazione tipica:

Power Supply PWM
24Vdc





LED Driver - PWM current regulation and max current set with NFC tag

Overtag Driver **DDS 1275**

MADE IN ITALY

Specifications/ Specifiche

Nominal supply voltage	24Vdc
Tensione di alimentazione nominale	24Vdc
Power supply voltage range (min-max):	20-26 Vdc
Range di tensione di alimentazione (min-max):	20-26 Vdc
Range tensione uscita (@ 24 Vin)	9 ÷ 16 Vdc (max Vout = Vin - 4V)
Range tensione uscita (@ 24 Vin)	9 ÷ 16 Vdc (max Vout = Vin - 4V)
LED Driving Current (Min-Max):	50-1000mA
Corrente di pilotaggio LED (min-max):	50-1000 mA
Maximum output power:	900 mW (input: 24V – led: 18V – 50mA)
Potenza massima in uscita:	900 mW (ingresso: 24V – led: 18V – 50mA)
	18W (input: 24V – led: 18V – 1000mA)
	18W (ingresso: 24V – led: 18V – 1000mA)
Power Supply PWM Frequency:	200-3000Hz
Frequenza PWM di Alimentazione:	200-3000 Hz
Driver Control Mode:	Power PWM (Power supply)
Modalità di controllo del driver:	Potenza PWM (su alimentazione)
Driver current regulation mode:	Tag NFC
Modalità di regolazione corrente del driver:	Tag NFC
Over Temperature shut down	100 °C
Protezione sovraccarico termico del LED Driver	100 °C



LED Driver - PWM current regulation and max current set with NFC tag

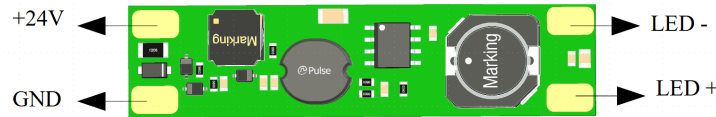
Overtag Driver **DDS 1275**

MADE IN ITALY

Electrical Connections/Connessione elettrica:

INPUT/INGRESSO

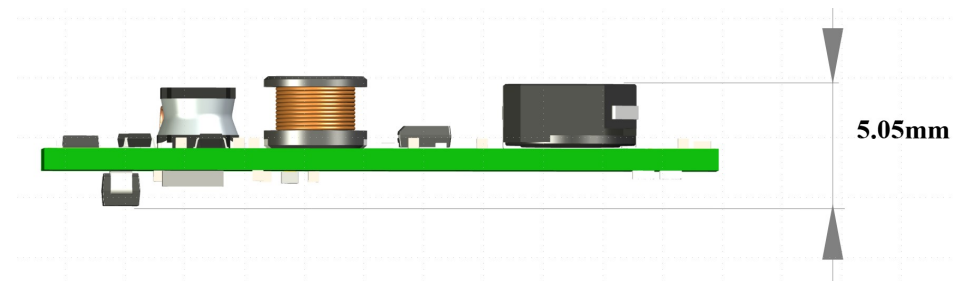
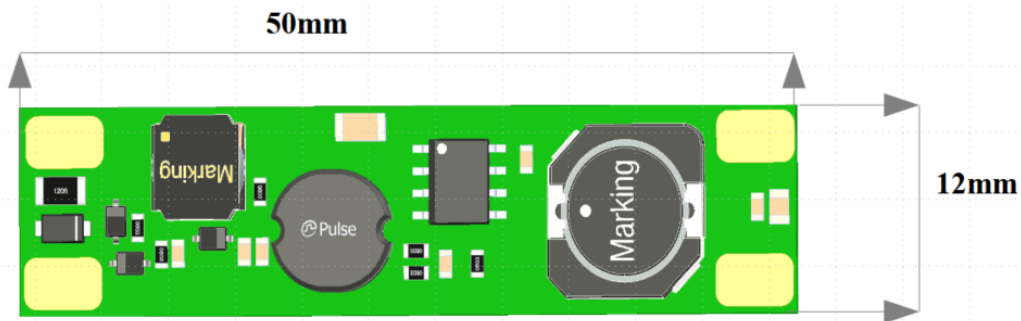
Silk-screen marking/Marcatura serigrafica::
+24v (Vin +)
GND (Vin -)



OUTPUT/USCITA

Silk-screen marking/Marcatura serigrafica::
+v (anode, led +)
GND (katodo, led -)

Dimensions/Dimensioni





LED Driver - PWM current regulation and max current set with NFC tag

Overtag Driver DDS 1275

MADE IN ITALY

Thermal overview:

Equipment used for the test:

Thermo-camera manufacturer FLIR mod. E60

A)Test condition: DDS1275 – Input:24V. Outputs: 18V – 1000mA

Ambient T.: 21°C

Panoramica termica:

Attrezzatura utilizzata per la prova:

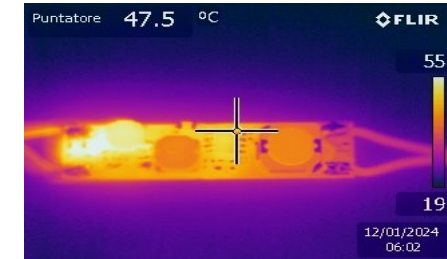
Produttore termocamera FLIR mod. E60

A)Condizione di test: DDS1275 – Ingresso:24V. Uscite: 18V – 1000mA

T. ambiente: 21°C

Id.	Designator	Component	Detected Temp. (°C)	Limit Temp. (°C)
Sp1	U1	Led Driver	47.5	100 °C
Sp2	L2	47UH-WEPD-1050	39.7	115 °C
Sp3	D1	STPS2H100A	60.8	

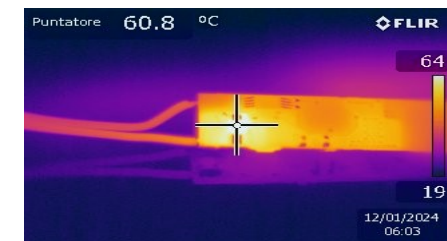
SP1



SP2



SP3





LED Driver - PWM current regulation and max current set with NFC tag

Overtag Driver DDS 1275

MADE IN ITALY

Driver programming procedure with NFC tag:

NB: Procedure will be indicated shortly after completion of software development.

Procedura di programmazione driver con tag NFC:

NB: La procedura verrà indicata poco dopo il completamento dello sviluppo del software.